

WATERPROOFING APPLICATION USING TAL SUPERFLEX

TAL Superflex is a ready to use acrylic based liquid membrane ideal for waterproofing showers and balconies. Tiling can commence after 72 hours. TAL Superflex emulsion must be used in conjunction with TAL Superflex Membrane.



The substrate to be waterproofed must be clean, dry, firm and sound free from dust, loose particles and surface contaminants, and must have a moisture content of less than 3% before the waterproofing can be applied.



All substrates must be primed prior to the TAL Superflex application. Prime woodfloated substrates with TAL Floor Primer and powerfloated / steelfloated surfaces with a TAL Floorkey Slurry.



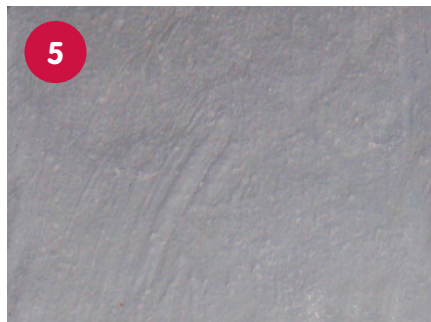
To allow for movement a 10mm bead of flexible silicone must be applied into all internal corners and interfaces prior to the TAL Superflex application.

Due care must be taken to ensure the silicone bead is not flattened out.



Apply a coat of TAL Superflex by brush or roller to the interfaces. Immediately bed a 200mm wide strip of TAL Superflex Membrane into the wet TAL Superflex, with the membrane extended 100mm on either side of the interface.

The membrane must be pushed into the corners. Apply a heavy topcoat of TAL Superflex over the membrane to saturate the membrane before the first coat dries.



For the main area application apply a coat of TAL Superflex over the primed surface. Immediately bed the TAL Superflex Membrane into the wet TAL Superflex, ensuring there are no wrinkles in the membrane and no air pockets trapped underneath.

Apply a heavy topcoat of TAL Superflex over the membrane to saturate the membrane before the first coat dries.



It is essential that the main TAL Superflex application overlaps the corner joints, i.e. the interface application must be completely covered by the main area application.

7 DRAINS - Apply a coat of TAL Superflex up the pipes and immediately position the strip of TAL Superflex Membrane into the wet TAL Superflex. Apply a heavy topcoat of TAL Superflex over the membrane to saturate the membrane before the first coat dries. For wastes that are flush with the floor, take the application down into and around the waste.

8 SHOWERS - For shower floors the waterproofing must be carried through into the outlets and shower walls must be waterproofed to full shower rose height.

9 TILING OVER WATERPROOFING - Allow the TAL Superflex to dry completely (3 days) before installing tiles using TAL Goldstar 6 mixed with TAL Bond and grouting using TAL Wall & Floor Grout mixed with TAL Bond. Do not use showers for at least 5 days after completion of tiling and grouting to ensure that the installation is fully cured.